



GOODFELLOWS

www.goodf.co.uk



PORTFOLIO No 2

more...

inspiring, more extraordinary, more stylish,
more variety and more choice.

That's what we have brought to the NEW Portfolio No2.

For the past year we have been listening, watching and searching for the latest movements in culinary innovation and the best innovative products and designers to bring you even more fantastic products.

As our collections grow, we will bring you regular updates in our new download format, so you are always up-to-date with the very best from G & G.



F02370-27 Aria Wide Rim Plate Matt/Shiny 27cm



NARUMI

Narumi Corporation has manufactured fine bone china since 1911. Their long history in such specialist production, married with the spirit of Japanese craftsmanship, has established the Narumi brand globally as a true mark of quality.

Narumi has been a brand of choice for hotels and restaurants around the world, due to the high-density crystallised formula which can withstand considerable shock and heavy usage.

Narumi own 100% of their own production facilities in Japan and Indonesia, which include their own decoration departments. Stringent quality control and fast reaction to decoration requirements ensure that Narumi standards of production and customer service are the highest in the industry.

Their extensive collections cater for all tastes and cuisines and they are constantly updating their ranges to complement global food trends.

Food dishes prepared by:
Above: Kenny Atkinson, Left: Stevie McLaughlan and Right: Adam Smith



Bone China

NARUMI

Aria



F02370-27
Aria Wide Rim Plate
Matt/Shiny 27cm



F02380-29
Aria Pasta Plate
Matt/Shiny 29cm

Terrace



F02491-29
Terrace Relief Pasta Plate
Matt/Shiny 29cm



F02492-17
Terrace Relief Plate
Matt/Shiny 17cm



F02492-23
Terrace Relief Plate
Matt/Shiny 23cm



F02492-27
Terrace Relief Plate
Matt/Shiny 27cm



F02492-30
Terrace Relief Plate
Matt/Shiny 30cm

Hammer



F02271-28
Hammer Dinner Plate
White 28cm

Bone China

NARUMI

Dice



F02272-21
Hammer (Over) Salad Plate
White 21cm



F02273-23
Hammer Butter Tray
White 23cm



F02281-16
Dice BB Plate
Matt/Shiny Wh 16cm



F02281-23
Dice Accent Plate
Matt/Shiny Wh 23cm



F02281-27
Dice Dinner Plate
Matt/Shiny Wh 27cm



F02281-30
Dice Service Plate
Matt/Shiny Wh 30cm



F02282-23
Dice Rim Soup Bowl
Matt/Shiny Wh 23cm



F02283-14
Dice Bowl
Matt/Shiny Wh 14cm



F02370-27 Aria Wide Rim Plate Matt/Shiny 27cm



F02271-28 Hammer Dinner Plate White 28cm



F02271-28 Hammer Dinner Plate White 28cm



F02282-23 Dice Rim Soup Bowl Matt/Shiny Wh 23cm

Bone China

NARUMI

Esprit



F02201-30
Esprit Round Plate
Matt/Shiny Wh 30cm



F02202-27
Esprit Dinner Plate
Matt/Shiny Wh 27cm



F02202-23
Esprit Meat Plate
Matt/Shiny Wh 23cm



F02202-18
Esprit Cake Plate
Matt/Shiny Wh 18cm



F02202-16
Esprit Side Plate
Matt/Shiny Wh 16cm



F02203-14
Esprit Bowl
Matt/Shiny Wh 14cm



F02204-10
Esprit Bowl
Matt/Shiny Wh 10cm



F02205-30
Esprit Service Plate
Matt/Shiny Wh 30cm



F02206-26
Esprit Cover For F02207-26



F02207-26
Esprit Deep Show Plate
Matt/Shiny Wh 26cm



F02208-23
Esprit Deep Plate
Matt/Shiny Wh 23cm



F02208-27
Esprit Deep Plate
Matt/Shiny Wh 27cm



F02209-9
Esprit Chappel/Free Cup
Matt/Shiny Wh 9cm



F02210-23
Esprit Oval Tray
Matt/Shiny Wh 23cm



F02211-12
Esprit Square Tray
Matt/Shiny Wh 12cm



F02212-28
Esprit Long Tray
Matt/Shiny Wh 28cm



F02205-30 Esprit Service Plate Matt/Shiny Wh 30cm

Food dish prepared by Adam Smith

Bone China

Esprit



F02213
Esprit Espresso Cup
F02214
Esprit Small Saucer



F02215
Esprit Coffee Cup
F02216
Esprit Large Saucer



F02073
Esprit Teapot
550cc



F02217
Esprit Tea Cup
Matt/Shiny



F02605
Esprit Creamer (M)
Matt/Shiny 160cc



F02218
Esprit Sugar Bowl w/Cover

Flat Rim



F02514
Flat Rim Tea/Coffee Cup
F02515
Flat Rim Tea/Coffee Cup Saucer
16cm



F02516
Flat Rim Espresso Cup
F02517
Flat Rim Espresso Saucer



F02518
Flat Rim Tea Pot
1-2P



F02519
Flat Rim Coffee Pot
1-2P



F02523
Flat Rim Sugar Bowl
with Cover



F02524
Flat Rim Creamer



F02410
Oblong Tray 15cm

Bone China

Cool Coupe



F02361
Cool Coupe Tea/Coffee Cup
F02362
Cool Coupe Common Saucer



F02363
Cool Coupe Espresso Cup
F02364
Cool Coupe Espresso Saucer



F02365
Cool Coupe Cappuccino Cup



F02366
Cool Coupe Sugar Container



F02367
Cool Coupe Creamer (M)



F02368
Cool Coupe Tea POT W/Cover
2P



F02369
Cool Coupe Mug



F02522
Cool Coupe Teapot w/Cover
1180cc



F02371
Cool Coupe Sugar Bowl
(Large)



F02372
Cool Coupe Sugar Bowl
(Small)

Flat Rim



F02526
Caster Tray
25cm



F02705
Jam Pot/Small Cup
63mm x 33mm(h)



F02706
Lid for Jam Pot/Small Cup
F02705



F02704
Marmalade Pot
60 x 61mm(h)





Decorated Bone China

“A designer knows when he has reached perfection not when there is nothing left to add but when there is nothing left to take away.”

Antoine de Sainte-Exupery

There was a time when decorated Bone China was the height of sophistication and taste and then there was a time when it seemed not so sophisticated, or tasteful, and that it should only belong in the past; but like all great things, they return to our consciousness as if we've just invented them.

Decorated Bone China is having what they call, 'A moment', when it is de rigueur to serve Bone China, especially for that most English of traditions, Afternoon Tea. Should anyone drink tea out of anything else? Surely not! Tea & Bone China are meant for each other.

But the big question is when is it right to decorate? Can decoration ever live with creative cuisine?

The smart money will always be on decorated Bone China for Afternoon Tea and not just on cups & saucers. If you want your perfectly prepared sandwiches, scones & fancies to achieve it's creative best, then even the slightest hint of decoration will add that little extra frivolity and delicacy that suits the occasion.

If you want your Banqueting suite to set a quality tone, then think about decoration. It looks like you've bothered. But please, no hideous clumpy designs that you'll be as embarrassed by as that hair cut you thought was so stylish when you were 16.

Like all great things, making a first impression is critical, so if you are going to make a design statement, be bold with a charger plate, and then let the food take centre stage with decoration playing only a subtle part in the proceedings and then for the finale, the decoration returns to the stage with the Tea, Coffee & Petits Fours.

Remember a design can be as simple as a fine Platinum line around the rim of an equally fine plate, or it can be a statement which expresses your brand personality.

If you want to take a look at decorated Bone China that will withstand the rigours of volume service, Narumi has a fantastic selection of design suggestions for you to look at, with samples in our showroom. We can also provide the expert design service of Narumi, which can create original designs in less than 1 week. The Narumi design team have created designs for some of the world's finest brands.

Why not find out what decorated Bone China can bring to your service?

NARUMI





F13D-006 Hering Berlin Deep Plate Wide Rim 220 x 45(h) mm



F13D-021 Saucer 165 x 25h mm PULSE
F13D-016 Amuse Bowl 75 x 60h mm VELVET

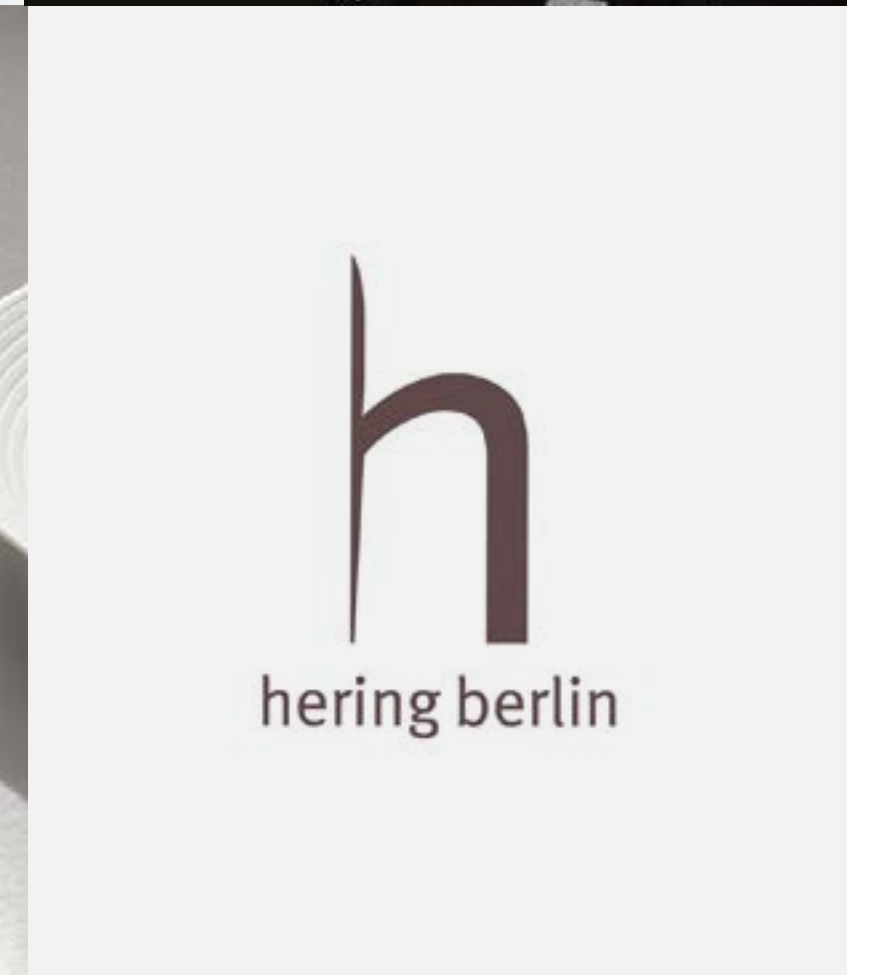


F13D-002 Coupe Plate 310 x 45(h) mm Perforated Rim

Stefanie Hering, designer, master craftswoman and ceramics expert, founded the factory in Berlin in 1992. Imbued with her personality and creative energy, Hering Berlin today produces crockery, drinking glasses, table textiles and lamps.

Stefanie's exceptional abilities have resulted in the production of a range of formally sophisticated designs in dimensions that push the boundaries of what can be made in porcelain. She is constantly striving to extend our knowledge of the possibilities for hand-made porcelain.

She explains that her endless curiosity and will to challenge the norm "enable us to create products, which truly support the spirit of enjoyment and functionality in our modern age. In that way we liberate ourselves from the traditionally closed notion of the crockery 'service' and open up new ways of looking at the possibilities for entertaining in family and social situations. At Hering Berlin we seek to shift the concept of hospitality out of its socially somewhat stiff, strictly formal dimension into one that is rather more underpinned by emotion."





Food dishes prepared by; Top Left Luke Tipping, Bottom Left Adam Smith



Porcelain

Cielo



F13D-057
Cielo Bowl 15 x 3.5cm
F13D-052
Cielo Bowl 30 x 6cm



F13D-023
Cielo Bowl Perforated Rim
22 x 4.5cm



F13D-002
Cielo Main Course Plate
31 x 4.5cm

Pulse



F13D-014
Pulse Bowl 15 x 3.5cm
F13D-058
Pulse Bowl 19 x 6cm
F13D-006
Pulse Bowl 22 x 4.5cm
F13D-059
Pulse Bowl 30 x 6cm



F13D-043
Pulse Bread Plate 18 x 2cm
F13D-037
Pulse Bread Plate 20.5cm
F13D-012
Pulse Bread Plate 20.5 x 3.3cm



F13D-060
Pulse Cloche 10.7 x 9.5cm
F13D-018
Pulse Cloche 18.4 x 16cm



F13D-013
Pulse Coupe Plate 20.5 x 3.3cm



F13D-027
Pulse Cup
75ml



F13D-078
Pulse Dessert Plate 23.2cm
F13D-004
Pulse Dessert Plate 26 x 3cm



F13D-067
Pulse Espresso Cup and Saucer



F13D-061
Pulse Espresso Cup w/Handle
50ml

Porcelain

Pulse



F13D-009

Pulse Main Course Plate 29 x 2.8cm

F13D-007

Pulse Main Course Plate 31 x 4.5cm

F13D-070

Pulse Main Course Plate 32 x 2cm

F13D-008

Pulse Main Course Plate 32 x 3cm



F13D-039

Pulse Mini Bowl
10.5cm



F13D-011

Pulse Pasta Plate
30cm



F13D-005

Pulse Petit Fours Plate 11.5cm

F13D-079

Pulse Petit Fours Plate 22cm



F13D-072

Pulse Sauce Cup
100ml



F13D-017

Pulse Sauce Cup
130ml



F13D-015

Pulse Sauce Cup
400ml



F13D-028

Pulse Saucer
13.5cm



F13D-038

Pulse Serving Platter
335 x 176 x 24mm

F13D-031

Pulse Serving Platter
460 x 240 x 24mm



F13D-055

Pulse Solid Plate 12 x 4.1cm

F13D-075

Pulse Solid Plate 16.8 x 4.1cm



F13D-036

Pulse Soup Plate
25cm



F13D-076

Pulse Spice Bowl
7cm



F13D-068

Pulse Tea Cup and Saucer



F13D-074

Pulse Tea Cup w/Handle
170ml



F13D-062

Pulse Saucer
13cm



F13D-080

Pulse Tea Pot
800ml



F13D-066

Pulse Tea/Coffee Pot 500ml



Porcelain

Velvet



F13D-065
Velvet Bowl 19 x 6cm



F13D-040
Velvet Bread Plate
18 x 2cm



F13D-077
Velvet Cloche
18.4 x 16cm



F13D-029
Velvet Cup
75ml

F13D-026
Velvet Bowl 22cm x 4.5cm

F13D-053
Velvet Bowl 30 x 6cm

F13D-073
Velvet Bowl 35 x 12.5cm



F13D-024
Velvet Dessert Plate
26 x 3cm



F13D-046
Velvet Espresso Cup w/Handle
50ml



F13D-016
Velvet Espresso Cup w/o Handle
70ml



F13D-010
Velvet Main Course Plate 29 x 2.8cm

F13D-001
Velvet Main Course Plate 31 x 4.5cm

F13D-054
Velvet Main Course Plate 32.5 x 2cm

F13D-049
Velvet Main Course Plate 32 x 2cm



F13D-003
Velvet Serving Platter
335 x 176 x 24mm



F13D-056
Velvet Solid Plate 12 x 4.1cm

F13D-069
Velvet Solid Plate 16.8cm x 4.1cm



F13D-020
Velvet Sugar Bowl w/Lid
11.5 x 7.5cm



F13D-071
Velvet Sugar/Milk Set



F13D-019
Velvet Tasting Spoon
12cm



F13D-044
Velvet Tea Bowl
10.4cm 250ml



F13D-047
Velvet Tea Cup w/Handle
170ml



F13D-032
Velvet Tea Cup w/o Handle
100ml



F13D-064
Velvet Mini Bowl
10.5cm



F13D-025
Velvet Pasta Plate
30cm



F13D-042
Velvet Sauce Cup
220ml



F13D-030
Velvet Saucer 13.5cm

F13D-051
Velvet Saucer 13cm



F13D-081
Velvet Tea Pot
800ml



F13D-033
Polite Silver Cup 180ml

F13D-034
Polite Silver Cup 50ml



F13D-035
Polite Silver Saucer
13cm



Stefanie Hering is one of the industry's most talented and unassuming designers. To deal with them as a brand is like dealing with a family; a family which cares passionately about every detail of its design and quality. Stefanie created a suite of multi-layering options, with textures that work together, so every choice has a beguiling number of possibilities. Some restaurateurs choose Hering Berlin for their whole menu; other choose key pieces. Aiden was always sure he wanted to use the Cielo pattern as key pieces, with every item totally unique as the holes are hand-punched into the body. Simply stunning.

Hering Berlin is one of the most beautiful brands in the world, with most of the top 50 world restaurants being fans of the brand. If you haven't experienced the passion of Hering Berlin, it's time you did.



Aiden Byrne at Manchester House

Aiden Byrne, man on a mission. Who could doubt his determination, watching him on Restaurant Wars was riveting and revealing.

One thing that came clean through all the personal trials and tribulations of establishing a new, high-ticket restaurant, in Manchester, was Aiden's clear vision of what his food should be and how it should look.

Aiden knew from the start that Hering Berlin was going to be his hero brand at Manchester House. He has been a Hering Berlin fan for a long time and Manchester House gave him the ideal setting to use it.





Above Food dish prepared by Adam Smith



Founded in 1747 by Duke Karl von Braunschweig at Fürstenberg hunting lodge, Furstenberg's history is littered with a succession of renowned porcelain painters, modellers and designers. It is Germany's second oldest porcelain manufacturer. Today, the FÜRSTENBERG trademark, the blue "F" with a crown above, is internationally recognised as a symbol of sophisticated porcelain artwork from Germany.



Porcelain

Smooth White Egg



Brothers Christian and Michael Sieger are renowned designers in tableware, they have also created collections for fashion, furniture, rugs and leather goods. They have collaborated with Furstenberg to jointly launch some truly unique and beautiful tableware. The Eggs are a playful and evocative range providing a sense of surprise when the food is revealed

Porcelain

Smooth White Egg



F97001-27
Deep Plate
27cm Matt Glazed



F97001-32
Deep Plate
32cm Matt Glazed



F97002-32
Flat Plate
32cm Matt Glazed



F97003
Flat Plate
32cm Raised Center
Matt Glazed



F97004
Flat Plate
32cm Raised Rim
Matt Glazed



F97011-27
Deep Plate
27cm Matt Glazed



F97011-32
Deep Plate
32cm Matt Glazed



F97012-32
Flat Plate
32cm Matt Glazed



F97013
Flat Plate
32cm Raised Center
Matt Glazed



F97014
Flat Plate
32cm Raised Rim
Matt Glazed



F97100-73
Smooth White Egg
73mm with Element



F97100-96
Smooth White Egg
96mm with Element



F97103-73
Smooth White Egg
73mm without Element



F97103-96
Smooth White Egg
96mm without Element



F97101
White Cushion Egg
96mm with Element



F97102
White Cushion Egg
96mm without Element



F97104-12
Small Saucer for Egg
125mm



F97104-16
Large Saucer for Egg
160mm



DESHOULIÈRES

◆◆◆

MADE IN FRANCE

Food dishes were prepared by:
Left: Graham Hornigold

F30160-30 Extra Flat Plate Cinnamon 30cm



Porcelain

Reglisse

DESHOULIÈRES

MADE IN FRANCE



F30001-32 Reglisse Vatel Flat Plate Black 32cm

F30001-30 Reglisse Vatel Flat Plate Black 30cm



F30002-32 Reglisse Aqua Plate Black 32cm

F30002-28 Reglisse Aqua Plate Black 28cm



F30160-30 Extra Flat Plate Cinnamon 30cm



F30170-30 Extra Flat Plate Pepper 30cm



F30004 Reglisse Wok Plate Black 27.5cm



F30005 Reglisse Sampling Plate Black 21cm



F30161 Wok Plate Cinnamon 27.5cm



F30171 Wok Plate Pepper 27.5cm



F30006 Reglisse Bread Plate Black 14.5cm



F30009 Reglisse Extra Flat Plate Black 27.5cm



F30162 Asian Bowl Cinnamon 18cm



F30172 Asian Bowl Pepper 18cm



In 1948, Guy Degrenne used his father's forge to produce his first products from the armour of tanks destroyed during the battle of Normandy. His ambition was to produce cutlery made from stainless steel, which he thought was both beautiful and hardwearing.

From that revolutionary idea, the business developed into other tableware products and now includes a total solution incorporating cutlery, hollowware, china and glassware. They also make kitchen accessories and cover both retail & professional markets. Guy Degrenne has established a worldwide reputation for elegant, durable and innovative tableware.

Food dish prepared by
Graham Hornigold



Porcelain & Stoneware

Modulo



Warm Grey

Kaolin



F06050-16
Modulo Nature Bread Plate
16cm - Warm Grey



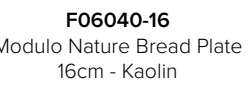
F06050-21
Modulo Nature Dessert Plate
21cm - Warm Grey



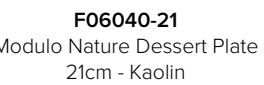
F06050-28
Modulo Nature Plate
28cm - Warm Grey



F06050-31
Modulo Nature Plate
31.5cm - Warm Grey



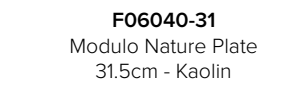
F06040-16
Modulo Nature Bread Plate
16cm - Kaolin



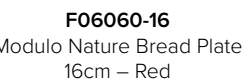
F06040-21
Modulo Nature Dessert Plate
21cm - Kaolin



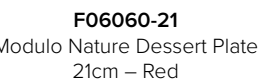
F06040-28
Modulo Nature Plate
28cm - Kaolin



F06040-31
Modulo Nature Plate
31.5cm - Kaolin



F06060-16
Modulo Nature Bread Plate
16cm - Red



F06060-21
Modulo Nature Dessert Plate
21cm - Red



F06060-28
Modulo Nature Dinner Plate
28cm - Red



F06060-31
Modulo Nature Dinner Plate
31.5cm - Red



F06055
Modulo Nature Mini Casserole
10cm - Warm Grey



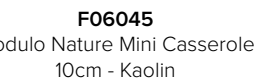
F06056
Modulo Nature Breakfast Bowl
14cm - Warm Grey



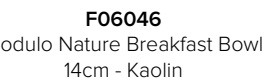
F06057
Modulo Nature Coffee Cup
11.5c - Warm Grey



F06058
Modulo Nature Coffee Saucer
12.5cm - Warm Grey



F06045
Modulo Nature Mini Casserole
10cm - Kaolin



F06046
Modulo Nature Breakfast Bowl
14cm - Kaolin



F06047
Modulo Nature Coffee Cup
11.5c - Kaolin



F06048
Modulo Nature Coffee Saucer
12.5cm - Kaolin

Porcelain & Stoneware

Modulo



Red



F06051
Modulo Nature Cereal Plate
21cm - Warm Grey



F06052
Modulo Nature Salad Bowl
24cm - Warm Grey



F06053
Modulo Nature Bowl
10cm - Warm Grey



F06054
Modulo Nature Cereal Bowl
17cm - Warm Grey



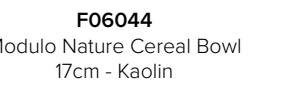
F06041
Modulo Nature Cereal Plate
21cm - Kaolin



F06042
Modulo Nature Salad Bowl
24cm - Kaolin



F06043
Modulo Nature Bowl
10cm - Kaolin



F06044
Modulo Nature Cereal Bowl
17cm - Kaolin



F06061
Modulo Nature Cereal Plate
21cm - Red



F06062
Modulo Nature Salad Bowl
24cm - Red



F06063
Modulo Nature Bowl
10cm - Kaolin



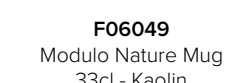
F06064
Modulo Nature Cereal Bowl
17cm - Red



F06059
Modulo Nature Mug
33cl - Warm Grey



F06070
Modulo Nature rect. Tray
38 x 15cm - Kaolin



F06049
Modulo Nature Mug
33cl - Kaolin

F06004 Boreal Satin Oval Plate 32 x 27cm



Above food dish prepared by Kenny Atkinson

Porcelain & Stoneware

Boreal Satin



F06001-33
Boreal Satin Presentation Plate
32.2cm



F06001-28
Boreal Satin Dinner Plate
28cm



F06001-22
Boreal Satin Round Dessert Plate
22.5cm



F06002
Boreal Satin Bread Plate
15cm



F06003
Boreal Satin Oval Plate
30 x 26cm



F06004
Boreal Satin Oval Plate
32 x 27cm



F06010
Gourmet Oval Plate
32 x 27cm



F06011
Gourmet Oval Plate
30 x 26cm



F06012
Gourmet Oval Dinner Plate
30.2 x 26cm



F06013
Gourmet Bowl
12cm / 30cl
CAN FIT INTO F06003



F06014
Gourmet Casserole Body
14cm - 50cl



F06015
Gourmet Casserole Lid
12.5cm



F06016
Gourmet Glass Dome Cover
17 x 9cm



Designer at Work - Pieter Stockmans



We are so fortunate to work with some of the world's best ceramics designers. Pieter Stockmans is one of them.

We met Piet and his business-partner daughter, Widukind, earlier this year. We visited their showroom-studio-gallery in Genk and it was a revelation. Pieter is not only an eminent ceramics designer, he was also an eminent professor of ceramics, teaching at Maastricht & Genk Universities.

His style has evolved over his illustrious career, to today's collection of modern, tactile and stunning designs which make food sing from the plate. Piet is charming, mischievous and still strives to innovate in his field.

His designs have caught the eye of many of the world's most famous chefs, with Alain Ducasse & Sergio Herman fans of Piet's work. This is his philosophy.

HOW NICE IT IS TO BE CREATIVE

How nice it is to be creative with a simple material such as clay. I did it my whole life and still have new ideas. How wonderful to express myself every day with this white gold as porcelain is called. Always in the same philosophy of tactility and vulnerability.

Piet Stockmans



Food dishes prepared by: Top Left and Bottom Right Adam Smith

Porcelain Pieter Stockmans



Above food dish prepared by Adam Smith

Porcelain Pieter Stockmans

Eclips

- F36122**
Round 'Eclips' Plate 27cm (Coupe 14cm)
- F36123**
Round 'Eclips' Plate 32cm (Coupe 20cm)
- F36124**
Round 'Eclips' Plate Deep 27cm(Coupe 14cm)



Above food dish prepared by Stevie McLaughlan

Dauw



F36101
Round 'Dauw' Plate 16cm
(Coupe 7cm)

F36102
Round 'Dauw' Plate 27cm
(Coupe 12cm)

F36103
Round 'Dauw' Plate 31cm
(Coupe 12cm)



F36112
Round 'Dauw' Plate Deep 14 x 4



F36104
Round 'Dauw' Plate 31cm
(Coupe 20cm)



F36106
Round 'Dauw' Sugar Bowl 8cm
F36107
Oval 'Dauw' Creamer 150cc

Upside Down



- F36081-09**
'Upside Down' Plate Deep 9 x 6cm(h)
- F36081-21**
'Upside Down' Plate Deep 21 x 6cm(h)
- F36082-14**
'Upside Down' Plate 14 x 3cm(h)
- F36082-18**
'Upside Down' Plate 18 x 3cm(h)
- F36082-18**
'Upside Down' Plate 18 x 3cm(h)



F36020
Round 'Rough' Plate
24 x 2cm(h)



F36080
Conus Caviar Pyramid-Blue
(3pcs)



F36098
Rectangle Block Dish
31 x 8 x 4.5cm

SCANDI COOL



Above food dish prepared by Adam Smith



We are all into Scandi Cool, with restaurants like Noma, Box Sets of The Killing, Sarah Lund's jumpers, Stig Larson's The Girl with The Dragon Tattoo, H & M, Acne & Ikea.

The equivalent in tableware is Figgjo, a brand that has quiet confidence in its craft and which had waited for the rest of the world to catch up with them. Now that we all appreciate the serious nature of Scandinavian design but love its individuality, we can let ourselves loose on its new-found 'Cool' status.

Figgjo has long been one of our personal favourites and now we have them back we are so excited by what they have brought with them. Who knew that all along they were just waiting for their moment. Whether you are a sleek, clean-cut Scandi or a moody, mysterious Scandi, Figgjo has the range for you. They are hard to pigeon-hole. They appeal to formal dining with their elegant, haute cuisine designer plates and then they go all uber-trendy with their Social Dining offering and that's without their stunning Buffet & Banqueting ranges. So much to see, so much to appreciate. Come and discover Scandi Cool for yourself.



Above food dish prepared by:
Top Right: Rupert Rowley
Middle Right: Adam Smith

Porcelain Tapas Dining

Figgjo Base



F48011
Base Plate 30cm
F48012-20
Base Plate 20cm
F48012-14
Base Plate 14.5cm



F48013-27
Base Plate high edge 27cm
F48013-17
Base Plate high edge 17cm



F48014
Base Plate semi deep
27cm



F48015
Base Plate w/handle
27 x 33.5cm



F48016
Base Plate w/handle
14 x10cm



F48017-14
Base Pedestal plate
14.5cm



F48017-20
Base Pedestal plate
20cm

Figgjo Skygge



F48301
Skygge Plate 30cm
F48302
Skygge Plate 20cm
F48303
Skygge Plate 14.5cm



F48304
Skygge Plate high edge 27cm
F48305
Skygge Plate high edge 17cm



F48306
Base Plate semi deep
27cm



F48307
Base Plate w/handle
27 x 33.5cm



F48308
Base Plate w/handle
14 x10cm



F48309
Skygge Saucer 14.5cm
F48310
Skygge Saucer 17cm



F48311
Skygge Pedestal plate
14.5cm



F48312
Skygge Pedestal plate
20cm



Figgjo have astutely picked up on the Tapas Dining style for small plates to share. Their beautifully decorated new ranges, mixed with the same shapes in white from the Base range, work incredibly well with this style of dining.



Above food dish prepared by; Top: Adam Smith



Porcelain Tapas Dining



Figgjo Flom



F48321-30
Flom Plate 30cm
F48321-20
Flom Plate 20cm
F48321-14
Flom Plate 14.5cm



F48324
Flom Plate high edge 27cm
F48325
Flom Plate high edge 17cm



F48326
Flom Plate semi deep 27cm



F48327-14
Flom Saucer 14.5cm
F48327-17
Flom Saucer 17cm

Figgjo Strok



F48331
Strok Plate 30cm
F48332
Strok Plate 20cm
F48333
Strok Plate 14.5cm



F48334
Strok Plate high edge 27cm
F48335
Strok Plate high edge 17cm



F48336
Strok Plate semi deep 27cm



F48337
Strok Cup 7cm



F48338
Strok Saucer 14.5cm



F48339
Strok Mug 8.5cm
F48340
Strok Mug 9cm



F48341
Strok Cup 12cm



F48342
Strok Saucer 17cm

Porcelain Tapas Dining

Figgjo Dryss



F48351
Dryss Plate 30cm
F48352-20
Dryss Plate 20cm
F48352-14
Dryss Plate 14.5cm



F48353 -27
Dryss Plate high edge 27cm
F48353 -17
Dryss Plate high edge 17cm



F48354
Dryss Plate semi deep 27cm



F48355
Dryss Plate w/handle 27 x 33.5cm



F48356
Dryss Plate w/handle 24 x10cm



F48360
Dryss Cup 7cm



F48358
Dryss Saucer 14.5cm



F48359
Dryss Mug 8.5cm



F48360
Dryss Mug 9cm



F48361
Dryss Cup 12cm



F48362
Dryss Saucer 17cm

Below food dish prepared by:
Bottom Left: Adam Smith, Bottom Right: Rupert Rowley



Porcelain Tapas Dining

Figgjo Pisa



F48109
Figgjo Pisa Bowl 11.5 x 12cm



F48110
Figgjo Pisa Lid/Plate 11 x 1.5cm



F48111
Figgjo Pisa Bowl 9 x 9.5cm



F48112
Figgjo Pisa Lid/Plate 9 x 1.2cm



Figgjo Sans



F48250
Figgjo Sans Narrow 11.5 x 6.6cm



F48251
Figgjo Sans Waved 11.5 x 7cm



F48252
Figgjo Sans Wide 11.5 x 6.8cm



F48253
Figgjo Ekorn 6 x 9.5cm
F48254
Figgjo Ekorn 4.5 x 6.5cm



Figgjo Cylinder



F48113 Figgjo Cylinder 13cm
F48114 Figgjo Cylinder 10cm
F48115 Figgjo Cylinder 7cm

Figgjo Platform



F48258
Figgjo Plattform with Indent 21 x 18cm



F48260
Figgjo Plattform 21 x 9cm
F48261
Figgjo Plattform 9 x 9cm

Porcelain Dining by Design

Figgjo Flak



F48031
Figgjo Flak Plate 32cm



F48032-30
Figgjo Flak Plate 30cm

F48032-27
Figgjo Flak Plate 27cm

F48032-24
Figgjo Flak Plate 24cm

Figgjo Felt



F48027
Felt Plate 32cm

F48028
Felt Plate 30cm



F48029
Felt Plate semi deep 30cm



F48030
Felt Plate deep 27cm

Figgjo Grad



F48001-32
Grad Plate 32cm

F48001-30
Grad Plate 30cm

F48001-27
Grad Plate 27cm



F48001-24
Grad Plate 24cm

F48001-21
Grad Plate 21cm

F48001-17
Grad Plate 17cm

F48001-14
Grad Plate 14.5cm



F48002
Grad Plate semi deep 32cm

F48004
Grad Plate semi deep 30cm

F48007
Grad Plate semi deep 21cm



F48003
Grad Plate semi deep wide rim 32cm



F48005
Grad Plate wide rim 27cm



F48006
Grad Plate deep 27cm



Porcelain Dining by Design

Figgjo Front



F48021-32
Front Plate 32cm

F48021-27
Front Plate 27cm

F48021-17
Front Plate 17cm



F48022
Front Plate wide rim 30cm



F48023-30
Front Coupe plate 30cm

F48023-21
Front Coupe plate 21cm

F48023-15
Front Coupe plate 15cm



F48024-27
Front Plate deep 27cm

F48024-24
Front Plate deep 24cm



Figgjo Europa



F48025
Front Cloche 15.2cm

F48026
Front Cloche 12.5cm



F48041-32
Europa Plate 32cm

F48041-30
Europa Plate 30cm

F48041-27
Europa Plate 27cm

F48041-24
Europa Plate 24cm



F48041-21
Europa Plate 21cm

F48041-17
Europa Plate 17cm

F48041-14
Europa Plate 14.5cm



F48042
Europa Plate deep 24cm

Figgjo Verde



F48051-30
Verde Plate 30cm

F48051-27
Verde Plate 27cm

F48051-21
Verde Plate 21cm

F48051-17
Verde Plate 17cm



F48052
Verde Plate deep 21cm



F48053
Verde Side plate 15 x 7.5cm



Porcelain Dining by Design

Figgjo Other Round Plates



F48060-29
Plate deep 29cm
F48060-27
Plate deep 27cm

Figgjo Oval



F48076-30
Oval plate 30 x 26cm
F48076-24
Oval plate 24 x 21cm

Figgjo Ellipse



F48081
Figgjo Ellipse 24 x 34.5cm
F48082
Figgjo Ellipse 20.5 x 29.5cm
F48083
Figgjo Ellipse Plate 17 x 24cm



F48084
Figgjo Ellipse Side plate
20.5 x 29.5cm
F48085
Figgjo Ellipse Side plate
17 x 24cm

Figgjo Convex



F48055-27
Konveks Plate deep 27cm
F48055-24
Konveks Plate deep 24cm
F48055-21
Konveks Plate deep 21cm

Figgjo Concave



F48056
Plate deep
21cm

Figgjo 'O'



F48255
Figgjo O 27cm
F48256
Figgjo O 32cm

Figgjo Boat



F48071
Figgjo Baat Form
22 x 14cm

Figgjo Boks



F48075
Figgjo Boks Plate
24 x 27.5cm



F48226
Chowder Bowl
13.5cm

Porcelain Accessories

Figgjo Felt Small Bowls



F48143
Felt Bowl 6.5 x 5.1(h) cm 10cl
F48144
Felt Bowl 6 x 2.9(h) cm 5cl

Figgjo Boks Square Bowls



F48148
Figgjo Boks 11 x 11(h) cm 44 cl
F48149
Figgjo Boks 11 x 7.2(h) cm 28 cl

Figgjo Krukke Jar



F48214
Figgjo Krukke Jar
10.5 x 9(h) cm 50cl



Figgjo Jugs/Boats



F48491
15 Jug 10 x 12.4 (h)cm 30cl
F48492
Figgjo 15 Jug 8.5 x 8.6(h) cm 15cl
F48493
Figgjo 15 Jug 7 x 6.1(h) x 8cl



F48471
Figgjo 45 Jug 15.2 x 9(h) cm 40cl
F48472
Figgjo 45 Jug 13.6 x 9(h) cm 25cl
F48473
Figgjo 45 Jug 10.9 x 9(h) cm 10cl



F48474
Figgjo 45 Jug without handle
7.5 x 9(h) cm 10cl



F48475
Figgjo 45 Gravy boat
19.5 x 7.5(h) cm 50cl



F48476
Figgjo 45 Saucer oval
22.5 cm



F48478
Figgjo 45 Gravy Boat
12.8 x 4.8(h) cm 13cl



F48477
Figgjo 45 Saucer oval
15cm



F48479
Egg cup
12.3 x 1.5(h) cm



F48480
Salt
3.2 x 8.4(h) cm



F48481
Pepper
3.2 x 8.4(h) cm

Porcelain Tea & Coffee

Figgjo Verde



F48441
Verde Mug 7.1 11.4 (h) cm 30cl
F48442
Verde Mug 6.4 x 10.2 (h) cm 22cl



F48443
Verde Saucer
17cm

Figgjo Front Dining



F48401
Front Cup
5.8 x 5.2(h) cm 8cl



F48402
Front Saucer
12.5cm

Figgjo Front Dining



F48403
Front Cup
7.3 x 6.5 (h) cm 18cl



F48404
Saucer
14.5cm



F48405
Front Cup
9.9 x 7.6 (h) cm 30cl



F48406
Saucer
16cm

Figgjo Base



F48421
Base Cup
7 x 7.1 (h) cm 19cl



F48422
Base Cup without handle
7 x 7.1 (h) cm 19cl



F48423
Saucer
14.5cm



F48424
Cup
12 x 6.2(h) cm 50cl



F48425
Saucer
17cm

Porcelain Tea & Coffee



Figgjo Felt



F48411
Felt Stacking cup
6.5 x 5.1(h) cm 10cl



F48412
Felt Saucer
12.5cm



F48413
Felt Stackable Cup
7 x 9(h) cm 20cl



F48414
Felt Saucer
14.5cm

Cups without Handles



F48444
Ting Mug without handle
8.2 9.8(h)cm 28cl



F48210
Ting Cup without handle
7.5 x 7.7(h) cm 17cl



F48415
Felt Stacking mug
8 x 11.4(h) cm 34cl

F48211
Ting Cup without handle
6.2 x 6.2(h) cm 8cl

Figgjo Tea/Coffee Pots



F48486
Figgjo 45 Lid for
F48482/F48483



F48487
Figgjo 45 Lid for
F48484/f48485

Figgjo Tea/Coffee Pots



F48482
Figgjo 45 Coffee Pot
18.2 x 9.7 x 17.8(h) cm 70cl



F48483
Figgjo 45 Coffee Pot
16.5 x 8.2 x 15.8(h) cm 45cl



F48484
Figgjo 45 Tea Pot
19.8 x 11.2 x 13.1(h) cm 70cl



F48485
Figgjo 45 Tea Pot
17.2 x 9.4 x 11.6(h) cm 45cl



Montgolfier has been an established designer and producer of decorative stoneware since 1947. It still remains in its original location in the beautiful Loire Valley and the products are 100% made in France.

Since 2000, Montgolfier has collaborated more closely with external designers to produce contemporary items specifically for today's restaurateurs. With their unique, specialist glazes providing added dimensions of texture and lustre, the products have immense appeal for food presentation.

Montgolfier continually works to develop new products in line with the ever-changing food trends and styles.

Montgolfier

Clair De Lune



- F04401-15** Clair De Lune Bread Plate 15cm-Satin White
- F04401-19** Clair De Lune Dinner Plate 19cm-Satin White
- F04401-25** Clair De Lune Dinner Plate 25cm-Satin White
- F04401-30** Clair De Lune Charger Plate 30cm-Satin White

Velours



- F04511** Velours Charger Plate 30cm-Grey
- F04512** Velours Dinner Plate 25cm-Grey
- F04516** Velours Charger Plate 30cm-Black
- F04517** Velours Dinner Plate 25cm-Black
- F04518** Velours Dessert Plate 19cm-Black

ID a Part



- F04520-28** ID a Part Dinner Plate 28cm-Granite Ivory
- F04520-25** ID a Part Dinner Plate 25cm-Granite Ivory
- F04520-19** ID a Part Dessert Plate 19cm-Granite Ivory
- F04520-14** ID a Part Bread Plate 14cm-Granite Ivory
- F04521** ID a Part Cereal Bowl 16cm-Granite Ivory
- F04522** ID a Part Couscous Plate 24cm-Granite Ivory
- F04523** ID a Part Pebblestone 7 x 20cm-Granite Ivory
- F04525-28** ID a Part Dinner Plate 28cm-Granite Brown
- F04525-25** ID a Part Dinner Plate 25cm-Granite Brown
- F04525-19** ID a Part Dessert Plate 19cm-Granite Brown
- F04525-14** ID a Part Bread Plate 14cm-Granite Brown
- F04526** ID a Part Cereal Bowl 16cm-Granite Brown
- F04527** ID a Part Couscous Plate 24cm-Granite Brown
- F04528** ID a Part Pebblestone 7 x 20cm-Granite Brown

Montgolfier

Signature



- F04501** Signature Galaxy Plate 28cm-Satin White
- F04502** Signature Galaxy Plate 28cm-Black

Velours



- F04421-10** Wenge Gourmet LM Tray 10 x 31cm
- F04422-15** Wenge Bread Plate 15cm
- F04422-19** Wenge Dessert Plate 19cm
- F04422-25** Wenge Dinner Plate 25cm
- F04422-30** Wenge Charger Plate 30cm

Lapillis



- F04470-19** Lapillis Dessert Plate 19cm-White
- F04470-25** Lapillis Dinner Plate 25cm-White
- F04470-30** Lapillis Charger Plate 30cm-White
- F04471-19** Lapillis Dessert Plate 19cm-Black
- F04471-25** Lapillis Dinner Plate 25cm-Black
- F04471-30** Lapillis Charger Plate 30cm-Black

Montgolfier

Pierre d'Anjou



- F04411-25** Pierre d'Anjou Soup Plate 25cm-Graphite
- F04412** Pierre d'Anjou Cloche Lid For Soup Plate-Graphite
- F04413** Pierre d'Anjou Bread Tile 11x14cm-Graphite
- F04414** Pierre d'Anjou Mise En Bouche Spoon-Graphite

Boreales



- F04424-15** Boreales Bread Plate 15cm-Grey
- F04424-19** Boreales Dessert Plate 19cm-Grey
- F04424-25** Boreales Dinner Plate 25cm-Grey
- F04424-30** Boreales Charger Plate 30cm-Grey
- F04425** Boreales Mini Tray 6 x 20cm-Grey
- F04426-19** Boreales Dessert Plate 19cm-Blue
- F04426-25** Boreales Dinner plate 25cm-Blue
- F04426-30** Boreales Charger plate 30cm-Blue

Prestige



- F04441-15** Prestige Bread Plate 15cm-Red Mirror
- F04441-19** Prestige Dessert Plate 19cm-Red Mirror
- F04441-25** Prestige Dinner Plate 25cm-Red Mirror
- F04441-30** Prestige Charger Plate 30cm-Red Mirror
- F04442-15** Prestige Bread Plate 15cm-Titanium
- F04442-19** Prestige Dessert Plate 19cm-Titanium
- F04442-25** Prestige Dinner Plate 25cm-Titanium
- F04442-30** Prestige Charger Plate 30cm-Titanium

Montgolfier

Couscous Plates



- F04423** Boreales Couscous Plate 24cm-Red
- F04461** Ubud Couscous Plate 24cm-Satin White

Orijin



- F04432-19** Orijin Dessert Plate 19cm-White
- F04432-25** Orijin Dinner Plate 25cm-White
- F04432-30** Orijin Charger Plate 30cm-White
- F04431-19** Orijin Dessert Plate 19cm-Black
- F04431-25** Orijin Dinner Plate 25cm-Black
- F04431-30** Orijin Charger Plate 30cm-Black

Planet



- F04496** Planet Little Bowl 8cm-White
- F04497** Planet Lid For Bowl 8cm-White



Serax Maison D'etre has developed an impressive reputation as a trend-setter, by collaborating with famous, internationally-renowned designers. The company is constantly in search of innovation and explores design opportunities with their existing and new designers, to provide cutting-edge products. Serax supports an international demand for decorative items and tableware, with highly efficient customer service and substantial stock held at their impressive headquarters in Kontich, Belgium.

The hospitality product ranges cover an extensive array of culinary styles and materials, from basic, rustic porcelain to extremely fine bone china. Serax can also provide beautiful decorative items including tea lights & vases to produce a complete designer look for the table.

Food dishes prepared by:
Above, Bottom Left and top Right: Stevie McLaughlan,
Right: Paul Hood



Bone China, Porcelain & Stoneware



Taparo



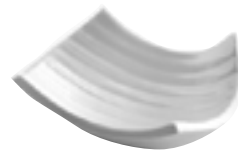
F03751-11
Taparo Square Plate
11 x 9cm



F03751-20
Taparo Square Plate
20 x 18cm



F03751-27
Taparo Square Plate
27 x 24cm



F03752
Taparo Square Cup
14 x 12cm



F03753
Taparo Rectangle Plate
27 x 8.5cm



F03754
Taparo Rectangle Plate
24 x 17cm



F03756
Taparo Round Plate
29cm



F03757
Taparo Round Plate 25cm
F03758
Taparo Round Plate 14cm



F03759-20
Taparo Round Bowl
20cm



F03759-25
Taparo Round Bowl
25cm



F03760
Taparo Low Bowl
16cm



F03761
Taparo High Bowl
14cm



F03762
Taparo Small Bowl 9cm



F03763
Taparo Small Bowl 4.5cm



F03764
Taparo Sauce Pitcher
Small



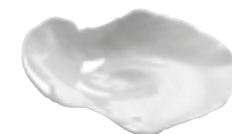
F03765
Taparo Sauce Pitcher
Large

Bone China, Porcelain & Stoneware



Ebb & Flow

Food dishes prepared by:
Above: Neil Rankin
Right: John Campbell



F03D-361-14
Ebb & Flow Sm
14 x 10cm



F03D-361-23
Ebb & Flow Med
23 x 20cm



F03D-361-35
Ebb & Flow Lrg
35 x 30.5cm



Bone China, Porcelain & Stoneware



Piet Boon



F03771-28
Piet Boon High Plate 28 x 3cm-XL

F03771-24
Piet Boon High Plate 24 x 3cm-Large

F03771-20
Piet Boon High Plate 20 x 3cm-Medium

F03771-16
Piet Boon High Plate 16 x 3cm-Small

F03771-12
Piet Boon High Plate 12 x 3cm-XS



F03770-28
Piet Boon Low Plate 28 x 1.5cm-XL

F03770-24
Piet Boon Low Plate 24 x 1.5cm-Large

F03770-20
Piet Boon Low Plate 20 x 1.5cm-Medium

F03770-16
Piet Boon Low Plate 16 x 1.5cm-Small

F03770-12
Piet Boon Low Plate 12 x 1.5cm-XS

Lens



F03783-11
Lens Deep Bowl
11 x 4.7cm-Small



F03782-23
Lens Bowl 23 x 6.7cm-Large

F03782-14
Lens Bowl 14 x 4.7cm-Medium



F03781-21
Lens Deep Plate 21 x 2.7cm-Medium

F03781-16
Lens Deep Plate 16 x 1.7cm-Small



Dusk



F03818
Dusk Coffee Cup
7.8 x 7.5cm



F03817
Dusk Espresso Cup
6.5 x 6cm



F03816
Dusk Double Bowl
17.5 x 4cm



F03815
Dusk Double Bowl
9 x 4cm



F03813
Dusk Flat Plate
25 x 1cm

Bone China, Porcelain & Stoneware



Dusk



F03811
Dusk Round Bowl 14cm - Large

F03810
Dusk Round Bowl 11.5cm-Medium



F03808
Dusk Straight Bowl
8.2 x 5.2cm



F03807
Dusk Straight Plate
25.5cm-Large



F03806
Dusk Straight Plate
20.3cm-Medium



F03805
Dusk Straight Plate
11cm-Small



F03804
Dusk Serving Plate
31 x 3cm



F03803
Dusk Round Plate
26.8cm-Large



F03802
Dusk Round Plate
20.5cm-Medium



Food dishes prepared by; Above Far Left: Stevie McLaughlan, Left: Paul Hood, Above: Neil Rankin

There are those in our industry who are true innovators and Jason Atherton is certainly among them. His 'Social Eating' phenomenon which began with Pollen Street Social and has traversed London landing most recently at City Social. But Social Eating has become an idea that we all wish we'd created and is such a perfect term for how we love to eat great food with fun, and noise, and great company. Yes, sure, there have been such restaurants before, but not with this clarity of vision and style.

Social Eating



All food dishes prepared by Paul Hood

Social Eating is something that now defines a trend that others can pick up and make their own, infusing it with their own personality but keeping the principles in sight. It's hard to define, because on one hand the quality of the cooking cries out Michelin standard but it doesn't carry with it a need for the hushed adulation of more formal dining.

Social Eating is for diners who know what they want to eat and if they want the best burger in town, then that's fine; or if you want the most delectable risotto that would be fine too. You can have both, with great cocktails, innovative dishes that are Shanghai-meets-Shoreditch. This most mercurial of dining trends is set to span the globe; like pirates picking up treasure from far-flung cuisines and depositing them on the table for eager diners to savour. Let imagination, great cooking and fun continue to evolve what Social Dining can be. Let us help you to develop new ideas in making the U.K. the most inviting Social Dining scene in the world.





The ceramics workshop was set up in 1976 by their parents, Nicole and Claude in the lovely hamlet called Les Guimards, minutes away from the village of Saint Amand en Puisaye, where a tradition of stoneware pottery has perpetuated since the middle ages.

Thanks to the local St Amand sandstone – which they extract and prepare themselves, and the exclusive glazes they create – Les Guimards are environmentally friendly and suited to everyday life.



Les Guimards

Grès de St-Amand-en-Puisaye - France

Burgundy based ceramists Nathalie and Christophe Hurtault reinterpret classical stoneware pottery.

Having inherited the family workshop, they passionately gave shape to the clay. Their designs, the natural materials they use and centuries of tradition are combined to create modern, yet timeless products.



Food dishes prepared by:
Above Left and Top Right: Graham Hornigold
Bottom Right: Neil Rankin

Stoneware



Basic



F05201
Basic Dinner Plate
24.5cm Dark Grey



F05203
Basic Dessert Plate
18cm Dark Grey



F05202
Basic Soup Plate
16.5cm Dark Grey



F05204
Basic Small Bowl
7cm 7cl Dark Grey



F05205
Basic Medium Bowl
9cm 15cl Dark Grey



F05206
Basic Large Bowl
10.5cm 35cl Dark Grey



F05214
Basic Salad Bowl Small
20.5cm Dark Grey



F05215
Basic Salad Bowl Large
23.5cm Dark Grey



F05251
Basic Dinner Plate
24.5cm Ivory



F05253
Basic Dessert Plate
18cm Ivory



F05252
Basic Soup Plate
16.5cm Ivory



F05254
Basic Small Bowl
7cm 7cl Ivory



F05255
Basic Medium Bowl
9cm 15cl Ivory



F05256
Basic Large Bowl
10.5cm 35cl Ivory



F05264
Basic Salad Bowl Small
20.5cm Ivory



F05265
Basic Salad Bowl Large
23.5cm Ivory

Food dishes prepared by:
Top Right: Paul Hood, Social Eating House
Bottom Right: Michael Penaluna, Jesmond Dene House



F05202
Basic Soup Plate
16.5cm Dark Grey



F05226
Basic Casserole Small
11cm w/o Knob Dark Grey

F05227
Basic Casserole Large
12cm w/o Knob Dark Grey

F05276
Basic Casserole Small
11cm w/o Knob Ivory

F05277
Basic Casserole Large
12cm w/o Knob Ivory

F05204
Basic Small Bowl
7cm 7cl Dark Grey

F05255
Basic Medium Bowl
9cm 15cl Ivory

F05252
Basic Soup Plate
16.5cm Ivory

Stoneware



Maiko



F05004
Maiko Small Bowl
11.5cm 15cl Dark Grey



F05051
Maiko Dinner Plate
28.5cm Ivory



F05053
Maiko Dessert Plate
21cm Ivory



F05052
Maiko Soup Plate
20.5cm Ivory



F05054
Maiko Small Bowl
11.5cm 15cl Ivory



F05055
Maiko Large Bowl
14cm 50cl Ivory



F05060
Maiko Creamer
25cl Ivory



F05062
Maiko Tumbler
20cl Ivory



F05063
Maiko Mini Dish
8cm Ivory



F05064
Maiko Pitcher 50cl
Ivory



F05067
Maiko Round Cake Dish
31.5cm Ivory



F05069
Maiko Salad Bowl Small
16.5cm Ivory



F05073
Maiko Sugar/Soup Bowl
12.5cm Ivory

Koom



F05151
Koom Dinner Plate
24.5cm Ivory



F05403
Gres De Puisaye Plate
16.5cm Dark Grey



F05155
Koom Medium Bowl
10cm 25cl Ivory



F05152
Koom Soup Plate
17.5cm Ivory



F05153
Koom Dessert Plate
19.5cm Ivory



F05108
Koom Fruit Dish
15cm Dark Grey



F05404
Gres De Puisaye Plate
22.5cm Dark Grey



F05405
Gres De Puisaye Plate
26.5cm Dark Grey



F05104
Koom Small Bowl
7.5cm 8cl Dark Grey



F05105
Koom Medium Bowl
10cm 25cl Dark Grey



F05106
Koom Large Bowl
12.5cm 50cl Dark Grey



Uniquely **EXOTIC**

We have embarked on a unique path for us, to collaborate in the creation of our own range of stoneware made by craftsmen in Cambodia.

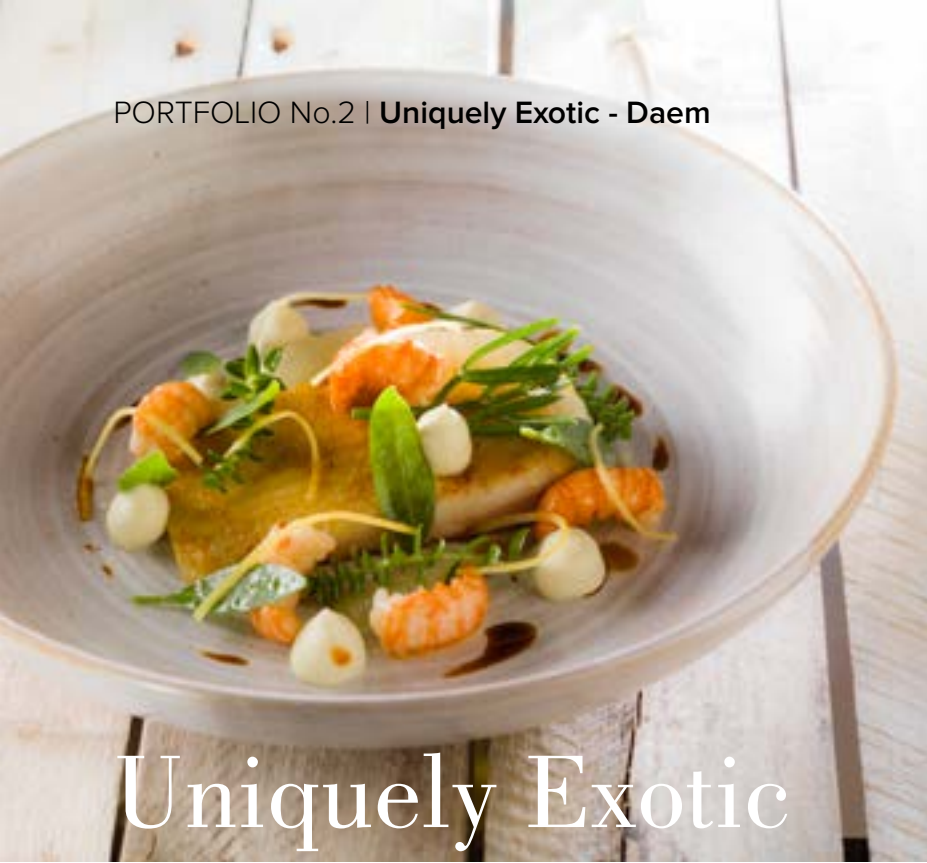
We are fortunate enough to work with an exceptionally talented and intuitive team who have opened up a new world to us. Their understanding of their art and the special nature of their operation offers a taste of the exotic which fits today's eclectic dining scene.

We are starting with our first capsule collection, which can be pre-ordered for delivery in December.

We are never pigeon-holed, never bettered; because at the heart of what we do is a passion to bring you what we think you will love.



Food dishes prepared by:
Left: Paul Hood, Above: Stevie McLaughlan



Uniquely Exotic



Food dishes prepared by, Far Left & Left: Adam Smith, Above Left: Stevie McLaughlan Above Right: Graham Hornigold

Daem



F67100
Rustic Ceramic Sauce Jug
5 x 10cm(h) - Thin White



F67101
Rustic Ceramic Small Curve Bowl
8 x 5cm(h) - Thin White



F67102
Rustic Ceramic XSM Tube Bowl
6 x 3cm(h) - Thin White



F67103
Rustic Ceramic XSM Rustic Bowl
7 x 3cm(h) - Thick White



F67112
Rustic Ceramic Medium Dinner Plate
24 x 2.5cm(h) - Thin White



F67113
Rustic Ceramic Large Dinner Plate
28 x 3cm(h) - Thin White



F67114
Rustic Ceramic Round Dish
19 x 4cm(h) - Thick White



F67104
Rustic Ceramic XSM Conical Bowl
8.5 x 5cm(h) - Thin White



F67105
Rustic Ceramic Deep Conical Bowl
10.5x7cm(h) - Thin White



F67106
Rustic Ceramic XSM Round Bowl
6.5 x 4cm(h) - Thin White



F67107
Rustic Ceramic Round Deep Bowl
12 x 6cm(h) - Thin White



F67115
Rustic Ceramic Starter Dish
24 x 4cm(h) - Thin White



F67116
Rustic Ceramic Bread Bowl
15 x 5cm(h) - Thin White



F67117
Rustic Ceramic Oval Platter
18x21x5cm(h) - Thin White



F67108
Rustic Ceramic Round Bowl
13.5 x 4cm(h) - Thin White



F67109
Rustic Ceramic Small Round Dish
13.5 x 3cm(h) - Thin White



F67110
Rustic Ceramic Side Plate
15x1.5cm(h) - Thin White



F67111
Rustic Ceramic Small Dinner Plate
20x2cm(h) - Thin White



F67118
Rustic Ceramic Oval Deep Dish
26 x 1cm(h) - Thick White



F67119
Rustic Ceramic Souffle Dish
9 x 6.5cm(h) - Thin White



F67120
Rustic Ceramic Main Course Dish
26 x 4cm(h) - Thin White



All food dishes prepared by Neil Rankin



Modern shapes with subtle coloured glazes, making this versatile stoneware suitable for casual dining settings. Mix and match between ranges for a classy eclectic look.

Costa Nova



Astoria



F27318
Astoria Charger Plate Ivory
33cm



F27301
Astoria Dinner Plate Ivory
28cm



F27302
Astoria Salad Plate Ivory
23cm



F27304
Astoria Soup/Pasta Plate Ivory
21cm



F27303
Astoria Bread Plate Ivory
15cm



F27305
Astoria Cereal Bowl Ivory
14cm



F27313
Astoria Ramekin Ivory
7cm



F27314
Astoria Ramekin Ivory
9cm

Friso



F27001
Friso Dinner Plate
28cm



F27002
Friso Soup Plate
26cm



F27003
Friso Salad Plate
21cm



T70351
Roman XS 11 x 22 x 1cm
T70318
Roman XL 13 x 27 x 1cm



T70319
Caesar Grey
15 x 11 x 10cm



T70351
Roman XS
11 x 22 x 1cm



T70316
Mini BBQ
15 x 11 x 10cm



T70321
Emperor Green Stone
20 x 10 x 2cm



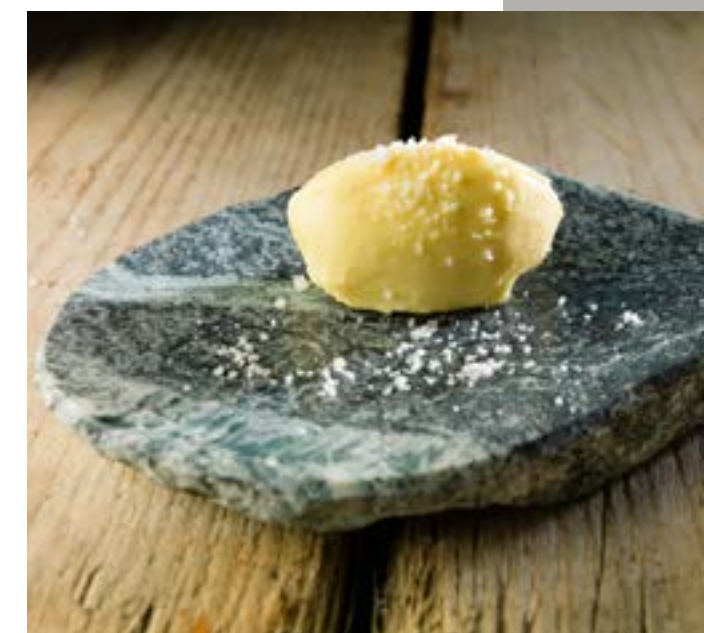
T70364
Rustic Flat
19 x 12 x 2cm



T70317
Cool Barbecue XS 30 x 11 x 6cm
T70335
Cool Barbecue XL 30 x 16 x 6cm



T70386
Faraon Yellow 17 x 15x 3cm
T70379
Faraon Green 17 x 15 x 3cm



100%Chef

Stone

Through our speciality supplier, 100% Chef, based in Barcelona, we are able to access the very best of innovation. These stone food plates and table BBQ's create a stunning presentation when used with smoking chips.

Here is a very small selection from what is available, with new ideas coming through from 100% Chef as the cutting-edge innovative chefs in Northern Spain push forward the boundaries of presentation. If you want to see the full range of stone presentation ideas ask us for 'The Secret Files'.



English Steak Knives

English Steak Knives

Loxley



X05004 Loxley Rosewood Scales and 3 brass/steel rivets



Stag Handle

Brooklyn



X05012 Brooklyn Rosewood Scales with 3 brass rivets



Dymondwood 'Earth' Handle



Dymondwood 'Cherry/Walnut' Handle

Rivelin



X05022 Rivelin Rosewood Scales with 2 steel pins



Stag Handle

Chefonomy;

'its about updating your own style of cooking through the use of new techniques, not adapting to someone else's style.'

Chefonomy is our name for the art of future cooking. We don't call this Molecular Gastronomy because we think that is a defined style of cooking. What we think Chefonomy is; its about updating your own style of cooking through the use of new techniques, not adapting to someone else's style.

We believe we offer something unique in bringing you not only the technical equipment and presentation ideas that we have found but we also arrange totally innovative demonstration events that bring the most creative masters of these techniques to your doorstep. We, like you, are discovering new things every day, but we believe our U.K. culinary scene is leading the way in adapting these techniques to cuisine that is less challenging to those who just want to eat great food.

Our events and products are always aimed at what we think will interest and intrigue you and we continue to look for products that will suit your style, not mimic those that have gone before. Yes, experience and influence is important but we don't think you will be seduced by offering products attached to a famous name. We believe our chefs in the U.K. learn from the best but never imitate.

Chefonomy is ours, it belongs to the great chefs of the U.K. because they know what to make of it.

Here are some images from what Chefonomy brought to you in 2014. What will Chefonomy bring to you next time?



Mixology

Can you ever believe there was a time when a restaurant just had a barman, not a Mixologist? It seems almost inconceivable now that cocktails were ever reduced to a limited list of old fashioned favourites from a bygone age. Now cocktails & Mixology can be as key to the social currency of a restaurant as the food.

The art and science of Mixology is complex, creative and continually evolving. Like gastronomy, it is utilising new modern techniques involving the use of aromas, gases and smoke as well as exploring the discovery of new flavour combinations. There is an ever-closer coming-together of gastronomy and Mixology to a point where the lines are becoming blurred. When is drink a food and when is food a drink??



We are now more than familiar with Hot Dogs rubbing shoulders with Champagne & Cocktails; and that's great but how far can this go and can Mixology evolve its art of presentation, the way gastronomy has?

When you consider that some of these liquid creations cost as much as a starter , or in some cases a main course in a restaurant, is it acceptable to just serve it in a glass? Surely not. That's why we are creating our own presentation plates for Mixologists and Bars.

Like chefs, Mixologists create according to their own style and their environment; and so we create for them according to their style. Here's one we poured earlier!!

100%Chef



T70034-23 OVNI Ø 23cm
T70034-28 OVNI Ø 28cm

GLASS

Borosilicate glass, due to its component structure containing Silica and Born Trioxide, is much more resistant to thermal shock than other glass types. It is sometimes better known by its trade names, including Pyrex. This resistance to thermal shock makes them ideal for use with very hot liquids or food and very cold gases and liquids such as Liquid Nitrogen.

We stock an extensive range of Borosilicate glassware from our speciality glass supplier 100% Chef. You can see more items in our GOODF GUIDE.



T70010
Tapa Cocktail D 2.5 x h 11cm



T70036
Dry Spoon 11 x 2.5cm



T70414
Dry Spoon Snow 11 x 2.5cm



T70037
Mini Teapot H 8cm 15cl



T70322
Mini Ovni 14cm



T70344 Vulcano XS 23cm
T70333 Vulcano XL 28cm



T70345
Paella Pyrex 20cm



T70346
Glass Cornets
(4 units)

Speciality Glass

100% Chef also supplies us with the most innovate glass presentation products. These service plates are ideal for snacks



T70035
Champagne Plate
(pack 6)



T70413
Mini Champagne Plate
(Pack 6)



T70406
Wine Plate
30 x 8 x 3cm(h)

Speciality Tableware-Glassware

Riedel Restaurant



F79001
Riedel Restaurant
Cabernet Glass



F79002
Riedel Restaurant
Champagne Glass



F79003
Riedel Restaurant
Chardonnay Glass



F79004
Riedel Restaurant
Riesling Glass



F79005
Riedel Restaurant
Port Glass



F79006
Riedel Restaurant
Water Glass



F79007
Riedel Restaurant
Malt Whisky Glass



F79008
Riedel Restaurant
Syrah Glass



F79009
Riedel Restaurant
Pinot Noir Glass



F79010
Riedel Restaurant
Beer/Ice Water Glass



F79011
Riedel Restaurant
Cognac Glass



F79012
Riedel Restaurant
Oaked Chardonnay Glass



F79013
Riedel Restaurant
Tequila Glass



Speciality Tableware-Glassware

Riedel "O" Restaurant



F79021
Riedel "O" Restaurant
Cabernet Glass



F79022
Riedel "O" Restaurant
Champagne Glass



F79023
Riedel "O" Restaurant
Chardonnay Glass



F79024
Riedel "O" Restaurant
Riesling Glass



F79025
Riedel "O" Restaurant
Martini Glass



F79026
Riedel "O" Restaurant
Syrah Tumbler



F79027
Riedel "O" Restaurant
Pinot Noir Glass

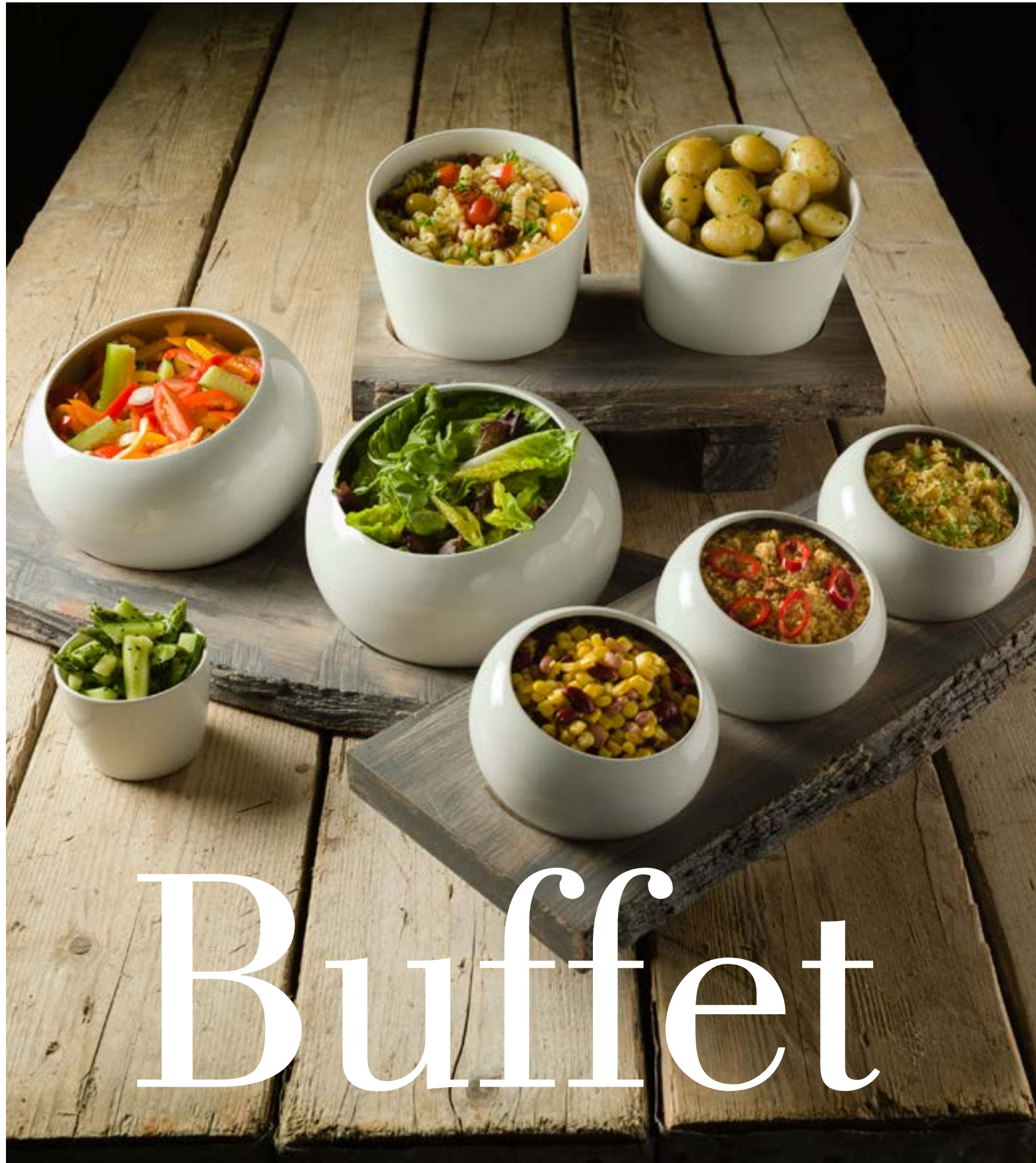


F79028
Riedel "O" Restaurant
Spirits Glass



F79029
Riedel "O" Restaurant
Chardonnay Glass





Buffet

We are proud to represent Figgjo As, which produces the most versatile and stylish porcelain, including its stunning Buffet lines. For more details call **0844 334 5232**

